

中国条蜂属一新种

(膜翅目:蜜蜂总科,条蜂科)

吴燕如

(中国科学院动物研究所,北京)

本文记述采自我国新疆的条蜂属一新种。模式标本保存于中国科学院动物研究所。

角条蜂 *Anthophora antennalis* 新种

雄虫 体长8毫米,黑色,头部(图1)唇基、上唇(基部两侧圆形褐色斑)、上颚(端部黑褐色)、颜侧(触角窝以下)、额唇基区、触角柄节及梗节的前表面均黄色;触角鞭节上表面红褐色,第1节基部及末节黑色;触角下表面黑褐色;各基附节黑褐色,2—4附节褐色;翅基片红褐色;胫节距浅黄色;腹部1—5节背板端缘黄褐色。头部明显横宽(长比宽为5:7);上颚无内齿;上唇横宽(长比宽为3:4),刻点粗而不均匀;唇基隆起较弱(图2),刻点较大且稀,不均匀;下颚须6节;下唇须4节(第1节极长);触角长达中胸背板端缘,触角(图3)柄节稍长于以下三节的和,第1鞭节稍短于以下两节的和(12:17),第3—11鞭节等长,第12节稍长,末节膨大为圆形,侧扁;颊宽为复眼宽(侧面观)的三分之二;后单眼间距稍长于单眼至复眼的距离(10:9),后单眼与颊顶边缘的距离小于单眼直径;中胸背板刻点密集,中央光滑具稀刻点;小盾片刻点较中胸四周稀;前及中足腿节及胫节稍膨大,后足腿节及胫节明显膨大,基附节宽;爪(图4)具中垫,内齿短于外齿;前翅三个亚缘室(图5);腹部背板刻点较小而密;第6腹板(图6)端缘中央凹陷;第7背板端缘具两个齿状小突起(图7);第7—8节腹板及生殖节见图8—13。体毛以灰黄色为主;唇基两侧角、颊、胸侧、前足腿节下表面、中足腿节及胫节下表面、后足胫节端部外侧均被白色长毛;各附节均被短而密的黄毛;额、颊顶边缘、中胸背板及腹部第1节背板被灰黄色长毛。

正模 ♂,新疆焉耆,1958. VII. 9,李常庆采。

本种近似中亚的 *Anthophora clavicornis* Fedtschenko, 经与该种模式标本对比,其主要区别如下:该种上唇端缘具三个小突起;唇基两侧缘各具较大的黑斑;触角末节宽,但其长度大于宽度;触角鞭节前表面黄色,但梗节黑色,非黄色等;无腹部,故无法对比外生殖器特征。

本文于1985年7月收到。
本文特征图由姚健同志覆墨,谨致谢意。

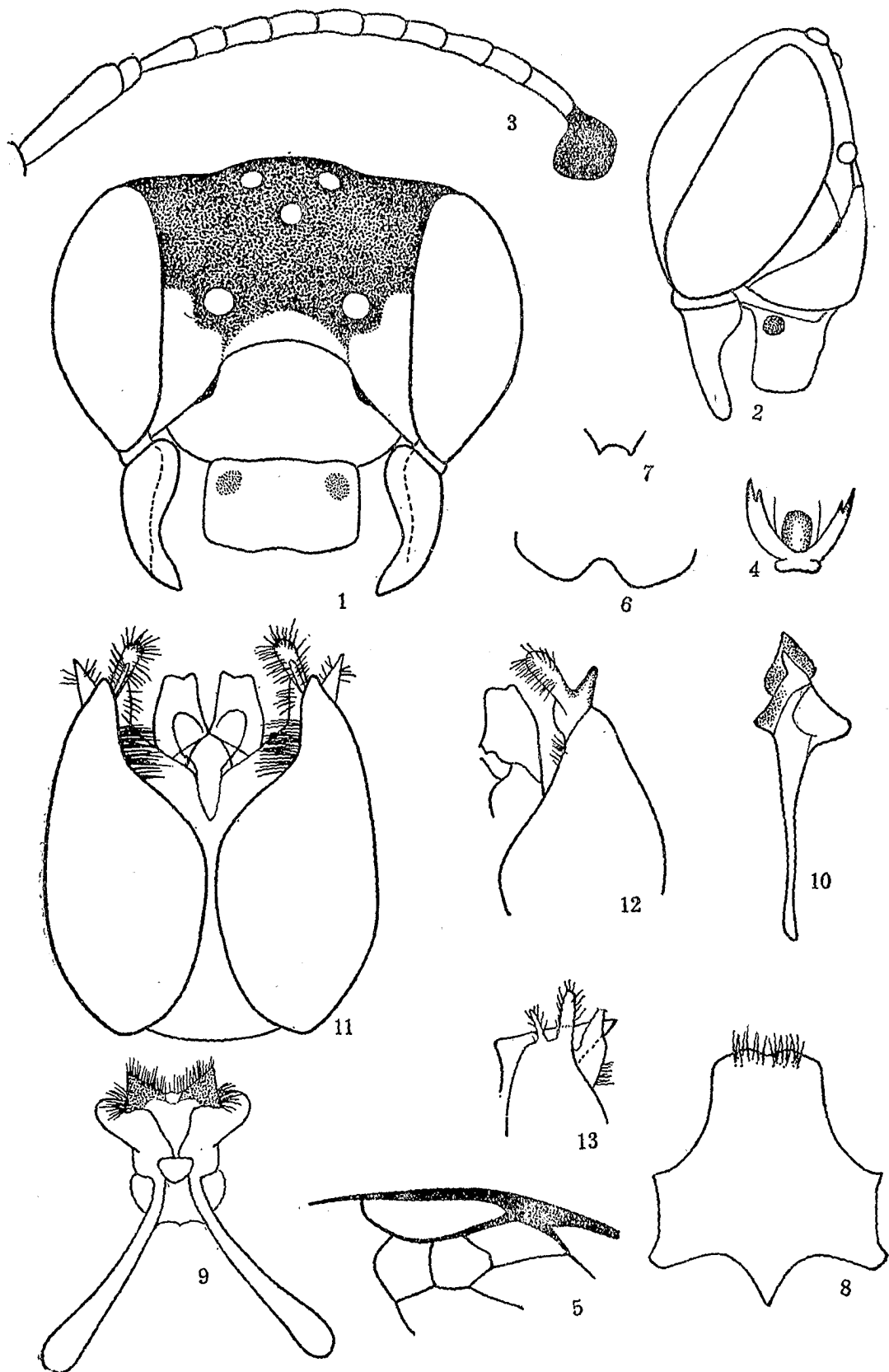


图 1—13 角条蝇 *Anthophora antennalis* sp. nov. ♂

1.头部; 2.头部侧面观; 3.触角; 4.爪; 5.前翅; 6.第6腹板; 7.第7背板; 8.第7腹板;
9.第8腹板; 10.第8腹板侧面观; 11.生殖节; 12—13.生殖刺突侧面观

参 考 文 献

- Мариковская Т. П., 1976 К систематике пчелиных трибы Anthophorini (Hymenoptera: Apoidea Anthophoridae) *Энтомологический Обзор*, LV, 3: 684—9.
- Мариковская Т. П. 1980 Новый род пчелиных Сем. Anthophoridae (Hymenoptera: Apoidea) *Энтомологический Обзор*, LIX, 3: 649—53.
- Федченко, А. П. 1875 Путешествие в Туркестан. II, 5: 1—44.
- Michener, C. D. 1944 Comparative external Morphology, phylogeny and a classification of the bees (Hymenoptera). *Bull. Amer. Mus. Nat. Hist.*, 82(6): 157—317.

A NEW SPECIES OF *ANTHOPHORA* FROM CHINA (HYMENOPTERA: APOIDEA, ANTHOPHORIDAE)

WU YAN-RU

(Institute of Zoology, Academia Sinica, Beijing)

This paper deals with a new species: *Anthophora unieunalis*, collected from Xinjiang. The type specimen is kept in the Institute of Zoology, Academia Sinica.

♂ Length 8 mm. Black; clypeus, labrum, (two brown marks on lateral basal sides), mandibles (apex blackish-brown), paraocula area (under antennal sockets), front-clypeal area, fore surface of scape and pedicelli yellow; upper surface of flagellum ferruginous, basal part of 1st and 13th flagella black; under surface blackish-brown; each basitarsus blackish-brown, 2nd—4th tarsi brownish; tegulae ferruginous; tibial spur pale yellow; apical margin of 1st—5th abdominal tergites yellowish-brown. Head (fig. 1) transverse; mandibles without inner tooth; labrum transverse with coarse punctures; clypeus convex (fig. 2) with large and sparse punctures; maxillary palpi 6-segmented; labial palpi 4-segmented; scape (fig. 3) longer than the following three together; 1st flagellum shorter than the following two together; 3rd—11th joints equal in length; 12th flagellum longer, 13th disk-form, flat; width of genae equal to 2/3 width of ocular. OOL:POL=9:10; mesonotum with dense punctures, but center sparser; fore and mid femorae and tibiae swollen, hind femorae and tibiae distinctly swollen, hind basitarsi flat; claw (fig. 4) with arolia, claws bifid; fore wing with 3 submarginal cells (fig. 5); punctures on abdominal tergites smaller and dense; center of apical margin of 6th sternite (fig. 6) concave; apex of 7th tergites with two teeth; 7th—8th sternites and genitalia see as in figs. 8—13. Hair on body pale yellow; lateral side of clypeus, genae, lateral surface of thorax, under surface of fore tibiae, under surface of mid femorae and tibiae, lateral side of apex of hind tibiae with long yellow hairs; each tarsus with dense short yellow hairs; front apical margin of vertex, mesonotum and 1st abdominal tergite with long yellow hair.

Holotype ♂ Xinjiang, Yanqi, 9. VII. 1958, Li Chang-qing collected.

This species differs to *Anthophora clavicornis* Fedtschenko, in: apical margin of labrum with three small tubercles; clypeus with 4 respects broad black band on lateral sides; the last flagellum oval-form; pedicel of antennae black, instead of yellow.